

Sir Frederic Leighton: 185+ Academic And Pre Raphaelite Paintings

Sir Frederic Leighton, 1st Baron Leighton, was a prominent Victorian-era painter and sculptor known for his grand, academic style and affinity with the Pre-Raphaelite movement. Born in 1830 in Scarborough, England, Leighton's artistic journey spanned five decades and left an enduring legacy in the realm of British art.

Early Life and Influences

Leighton's artistic talent emerged early on. He demonstrated exceptional drawing skills as a child and received formal training at the Royal Academy Schools in London. Leighton's early influences included the Italian Renaissance masters, particularly Raphael, and the works of the German Nazarene movement.

Academic Masterpieces

Leighton's academic style emphasized classical forms, balanced compositions, and meticulous attention to detail. His paintings often depicted mythological and historical scenes, drawing inspiration from ancient Greece and Rome. Notable works from this period include:



Sir Frederic Leighton: 185+ Academic and Pre-Raphaelite Paintings by Daniel Ankele

★★★★☆ 4.7 out of 5

Language : English
File size : 25018 KB
Text-to-Speech : Enabled
Enhanced typesetting : Enabled
Print length : 214 pages

Lending : Enabled
Screen Reader : Supported



- "Cimabue's Celebrated Madonna is Carried in Procession Through the Streets of Florence" (1853-55), depicting a historical event from the life of the painter Cimabue.
- "Proserpine" (1891), a depiction of the Roman goddess abducted by Pluto to become the queen of the underworld.
- "Bath of Psyche" (1890), featuring a nymph bathing in a secluded pool, surrounded by lush vegetation.

Pre-Raphaelite Leanings

Despite his academic roots, Leighton also shared affinities with the Pre-Raphaelite movement, which emphasized the use of vivid colors, detailed naturalism, and a preoccupation with medievalism. His Pre-Raphaelite works often featured idealized female figures, intricate landscapes, and elaborate costumes. Notable examples include:

- "The Golden Age" (1880-82), depicting a group of young women in a serene, idyllic garden.
- "Flaming June" (1895), featuring a languid woman sleeping on a couch in a sun-drenched summer landscape.
- "Venus Disrobing for the Bath" (1867), showing the goddess Venus preparing for her bath, surrounded by lush greenery and flowing drapery.

Symbolism and Allegory

Beyond their technical mastery, Leighton's paintings often carried allegorical meanings. He used symbols and motifs to convey complex narratives, explore moral themes, and provide social commentary. For instance:

- "Hercules Wrestling with Death for the Body of Alcestis" (1869) symbolizes the triumph of love over death and grief.
- "The Garden of Hesperides" (1892) represents the unattainable ideals of beauty and perfection.
- "The Arts of Industry as Applied to War" (1863) depicts the importance of science and technology in modern warfare.

Legacy and Impact

Leighton's work was widely acclaimed during his lifetime. He received numerous awards and honors, including the presidency of the Royal Academy from 1878 until his death in 1896. Leighton's paintings were highly sought after by collectors and played a significant role in shaping the artistic tastes of the Victorian era.

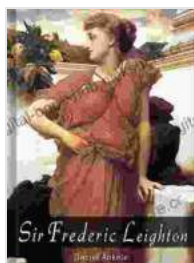
Leighton's influence extended beyond his own works, as he served as a mentor and inspiration to a generation of younger artists. His emphasis on academic training and his commitment to artistic excellence helped to establish a foundation for British art that continued to inspire throughout the 20th century.

Notable Paintings

In addition to the aforementioned masterpieces, here are some other notable paintings by Sir Frederic Leighton:

- "Cleopatra" (1876-77)
- "The Industrial Muse" (1850)
- "Cymon and Iphigenia" (1884)
- "The Daphnephoria" (1878)
- "Andromeda" (1889)
- "The Return of Persephone" (1891)
- "A Dance at Bodiam Castle" (1892)
- "Pandora" (1896)

Sir Frederic Leighton remains one of the most celebrated and influential artists of the Victorian era. His academic and Pre-Raphaelite paintings captivated the imagination of his time and continue to inspire and fascinate viewers to this day. Leighton's legacy as a master of painting, an advocate for artistic excellence, and a mentor to young artists serves as a testament to his enduring contributions to the world of art.



Sir Frederic Leighton: 185+ Academic and Pre-Raphaelite Paintings

by Daniel Ankele

★★★★☆ 4.7 out of 5

Language : English
File size : 25018 KB
Text-to-Speech : Enabled
Enhanced typesetting : Enabled
Print length : 214 pages
Lending : Enabled
Screen Reader : Supported

FREE

DOWNLOAD E-BOOK



Tough Cookies Don't Crumble: The Unbreakable Spirit of Those Who Overcome Adversity

Life is full of challenges. We all face them, in one form or another. But for some people, the challenges are so great that they seem insurmountable. They may come in...



The California-Born Diners, Burger Joints, and Fast Food Restaurants That Changed the World

California is known for many things, but its fast food scene is one of its most iconic. From In-N-Out to McDonald's, some of the most well-known fast food...