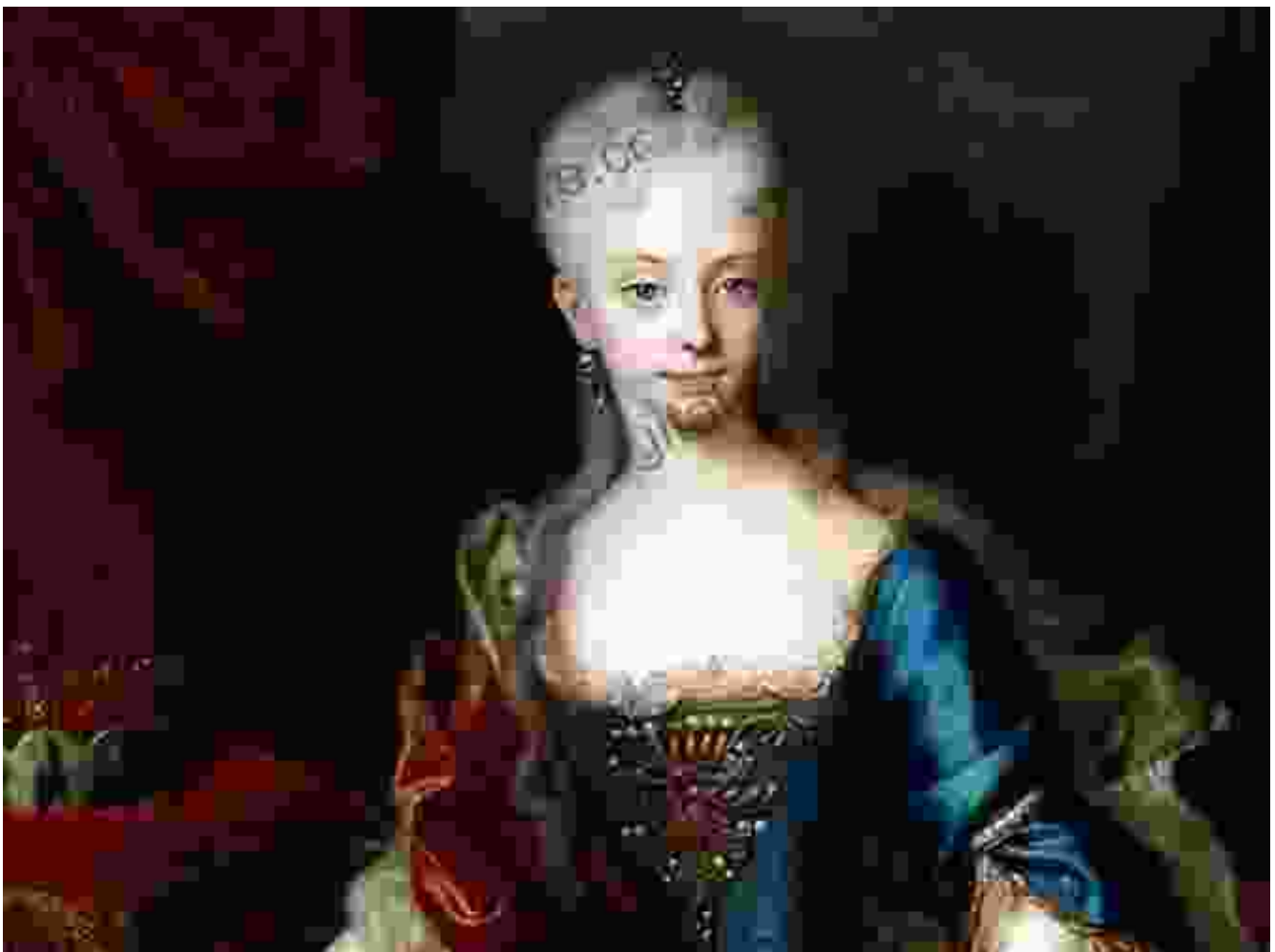
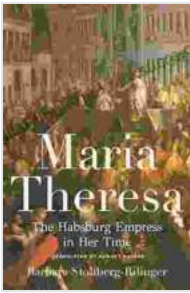


Maria Theresa: The Defining Empress of the Habsburg Empire

In the opulent tapestry of European history, Empress Maria Theresa stands as a towering figure, her reign marking a pivotal era for the Habsburg dynasty. This remarkable woman ruled over a vast and diverse empire, leaving an enduring legacy that continues to captivate historians and inspire modern leaders.

Early Life and Ascension to the Throne





Maria Theresa: The Habsburg Empress in Her Time

by Barbara Stollberg-Rilinger

★★★★☆ 4.5 out of 5

Language : English

File size : 163956 KB

Text-to-Speech : Enabled

Screen Reader : Supported

Enhanced typesetting : Enabled

Word Wise : Enabled

Print length : 1056 pages



Archduchess Maria Theresa was born on May 13, 1717, in Vienna, Austria. Her father, Emperor Charles VI, had no male heirs, making her the heir presumptive to the throne. From a young age, Maria Theresa received an exceptional education, preparing her for her future role as ruler.

In 1740, Emperor Charles VI died, leaving Maria Theresa as the sovereign of the vast Habsburg Empire. Faced with the daunting task of ruling an empire on the brink of war, she displayed remarkable strength and determination.

The War of the Austrian Succession



Upon Maria Theresa's accession, Prussia, Bavaria, and France seized the opportunity to challenge Habsburg dominance. The War of the Austrian Succession ensued, threatening to tear apart the empire. Despite the overwhelming odds, Maria Theresa refused to yield.

With her husband, Francis Stephen of Lorraine, she rallied her troops, appealed for foreign support, and skillfully negotiated diplomatic alliances. Her unwavering resolve and political acumen proved crucial in securing the empire's survival.

Reign as Empress

After the war, Maria Theresa embarked on a comprehensive program of reforms to strengthen the empire. She restructured the government, promoted education, encouraged trade and agriculture, and implemented social welfare programs.



Maria Theresa's reforms transformed the Habsburg Empire into a modern, centralized state. Her enlightened rule earned her the admiration of her subjects and the respect of European leaders.

Family Life and Legacy

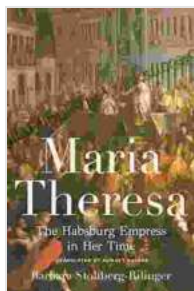
Maria Theresa was a devoted wife and mother. She had sixteen children, including Joseph II, who succeeded her as Emperor. Her family life was a source of great joy and stability during her reign.



Maria Theresa died on November 29, 1780, in Vienna, at the age of 63. Her reign had spanned four decades and profoundly shaped the course of Austrian and European history.

Maria Theresa is remembered as one of the greatest rulers in Habsburg history. Her legacy lives on in the flourishing cultural institutions she established, the reforms she implemented, and the enduring traditions that have shaped Austria and Central Europe to this day.

Empress Maria Theresa was an extraordinary woman who overcame adversity to become one of the most influential rulers of her time. Her reign transformed the Habsburg Empire, leaving a lasting impact on European history. Her strength, determination, and enlightened policies continue to inspire leaders and captivate historians centuries after her passing.



Maria Theresa: The Habsburg Empress in Her Time

by Barbara Stollberg-Rilinger

★★★★☆ 4.5 out of 5

Language : English

File size : 163956 KB

Text-to-Speech : Enabled

Screen Reader : Supported

Enhanced typesetting : Enabled

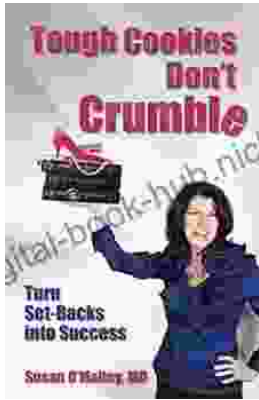
Word Wise : Enabled

Print length : 1056 pages

FREE

DOWNLOAD E-BOOK





Tough Cookies Don't Crumble: The Unbreakable Spirit of Those Who Overcome Adversity

Life is full of challenges. We all face them, in one form or another. But for some people, the challenges are so great that they seem insurmountable. They may come in...



The California-Born Diners, Burger Joints, and Fast Food Restaurants That Changed the World

California is known for many things, but its fast food scene is one of its most iconic. From In-N-Out to McDonald's, some of the most well-known fast food...