

# Exploring the Vibrant World of Ernst Ludwig Kirchner: 384 Color Paintings by a German Expressionist Master

## : Unveiling the Dynamic Art of Ernst Ludwig Kirchner

Ernst Ludwig Kirchner, a prominent figure in the German Expressionist movement, created a remarkable body of work that left an indelible mark on the art world. Among his extensive oeuvre, his collection of 384 color paintings stands out as a vibrant and evocative testament to his artistic vision. Kirchner's mastery of color and his unique approach to capturing the human condition continue to captivate audiences worldwide.



### 384 Color Paintings of Ernst Ludwig Kirchner - German Expressionist Painter and Printmaker (May 6, 1880 - June 15, 1938)

★★★★☆ 4.3 out of 5

Language : English  
File size : 18615 KB  
Text-to-Speech : Enabled  
Screen Reader : Supported  
Enhanced typesetting : Enabled  
Lending : Enabled

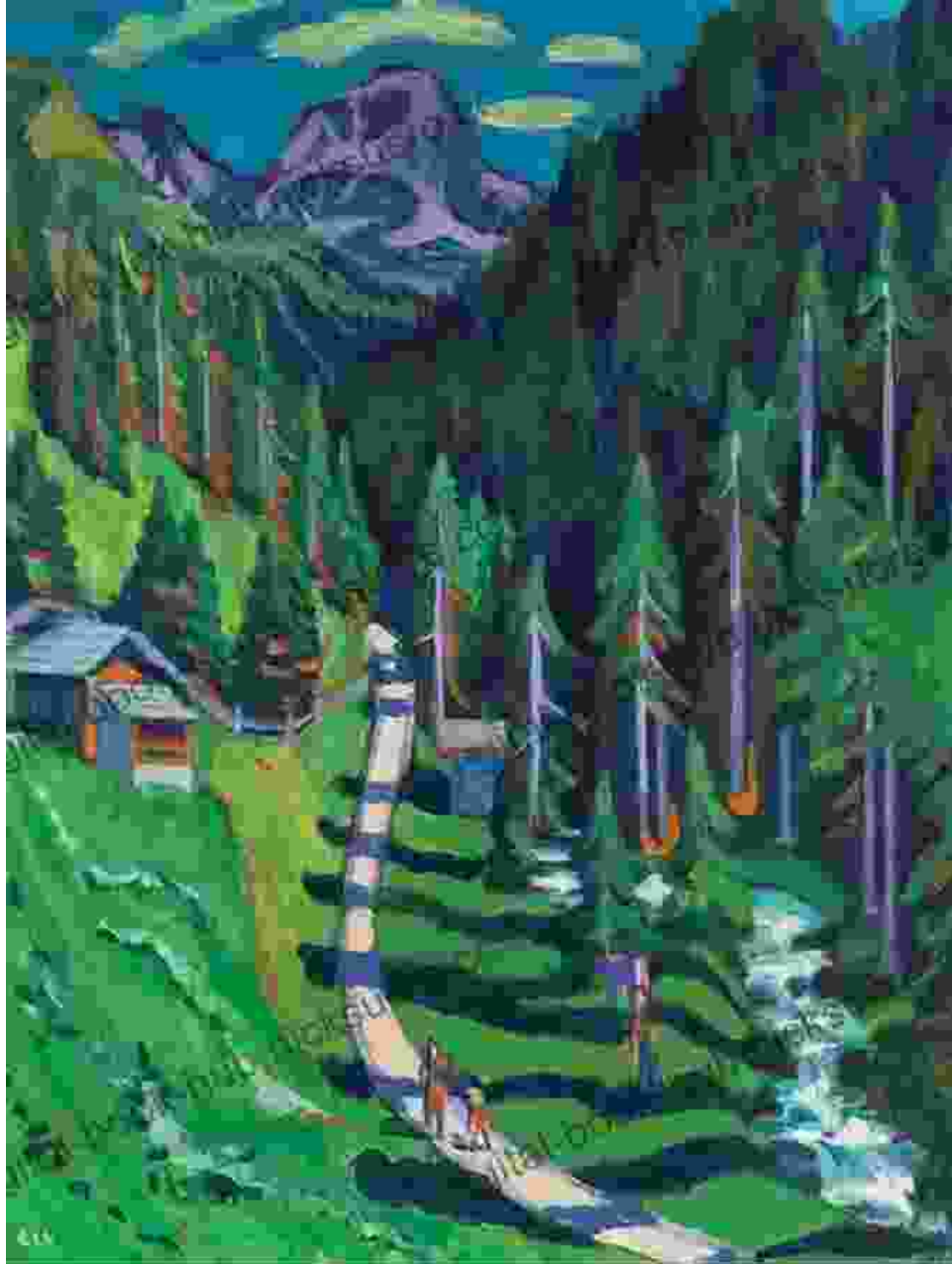


## The Expressive Power of Color

Kirchner's use of color was both bold and nuanced. He employed vibrant hues to convey emotions and create a sense of urgency and immediacy. In his painting "Street Scene, Berlin" (1913), the clashing reds, oranges, and

greens evoke the bustling energy of city life. In "Mountain Landscape with Farmhouses" (1917), the cool blues and greens create a serene and tranquil atmosphere.





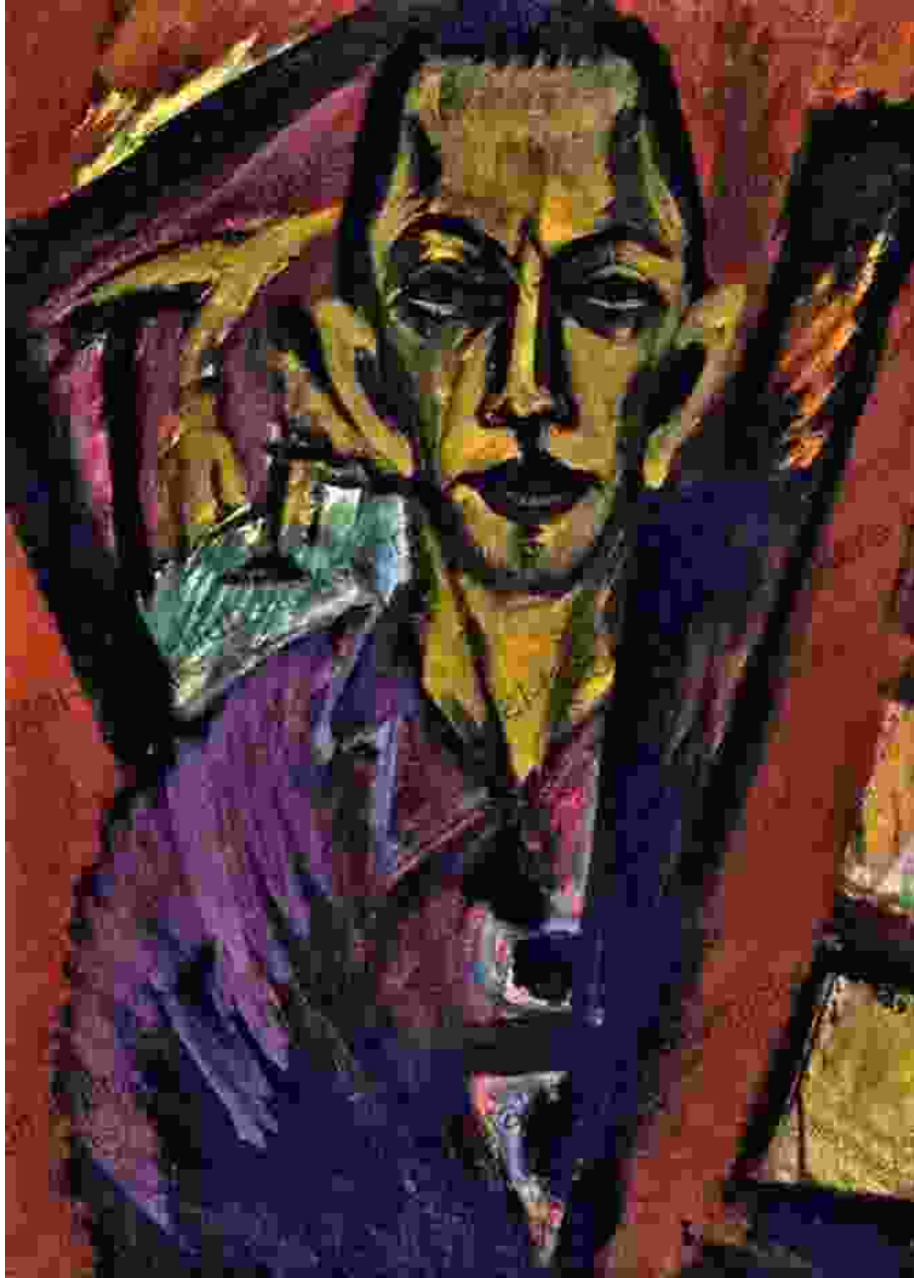
The cool blues and greens in Kirchner's "Mountain Landscape with Farmhouses" convey a sense of serenity and tranquility.

### **Capturing the Essence of Urban Life**

Kirchner was fascinated by the complexities of urban life, which he depicted in many of his color paintings. His work reveals the alienation and

anonymity of city dwellers, as well as the vibrant street culture and entertainment venues. In "Berlin Street Scene" (1913), he portrays the bustling crowds and illuminated shops, while "Self-Portrait as a Soldier" (1915) captures the somber reality of wartime urban life.



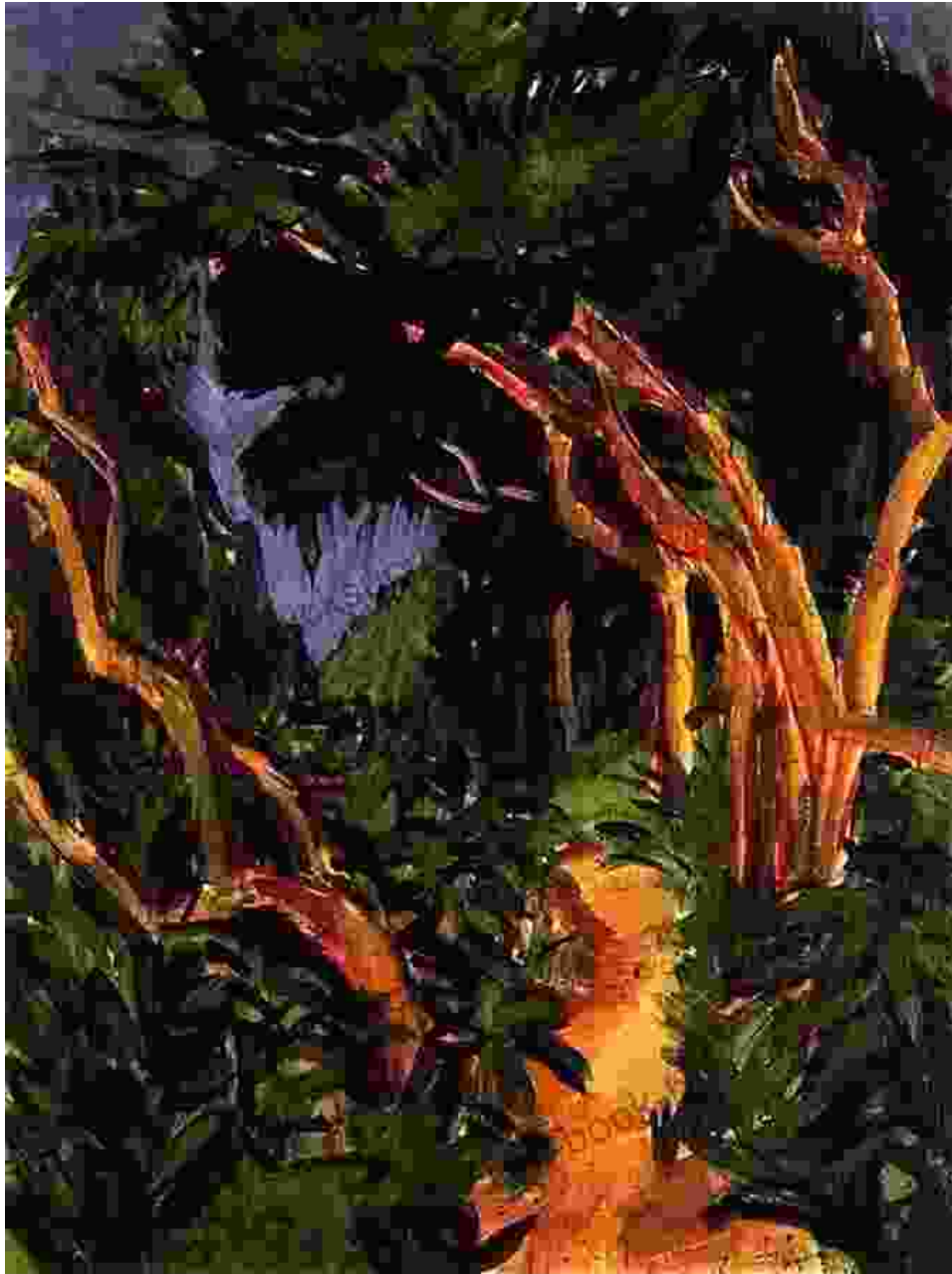


The somber colors in Kirchner's "Self-Portrait as a Soldier" reflect the grim realities of wartime urban life.

### **Exploring the Beauty of Nature**

In addition to his urban scenes, Kirchner also found inspiration in the natural world. His landscapes and nature paintings capture the beauty and

tranquility of the Swiss Alps, where he spent much of his later years. In "Forest Path with Two Figures" (1923), the vibrant greens and oranges create a sense of harmony between nature and human presence. "Winter Landscape" (1928) depicts the stark beauty of a snow-covered landscape, conveying a sense of isolation and tranquility.





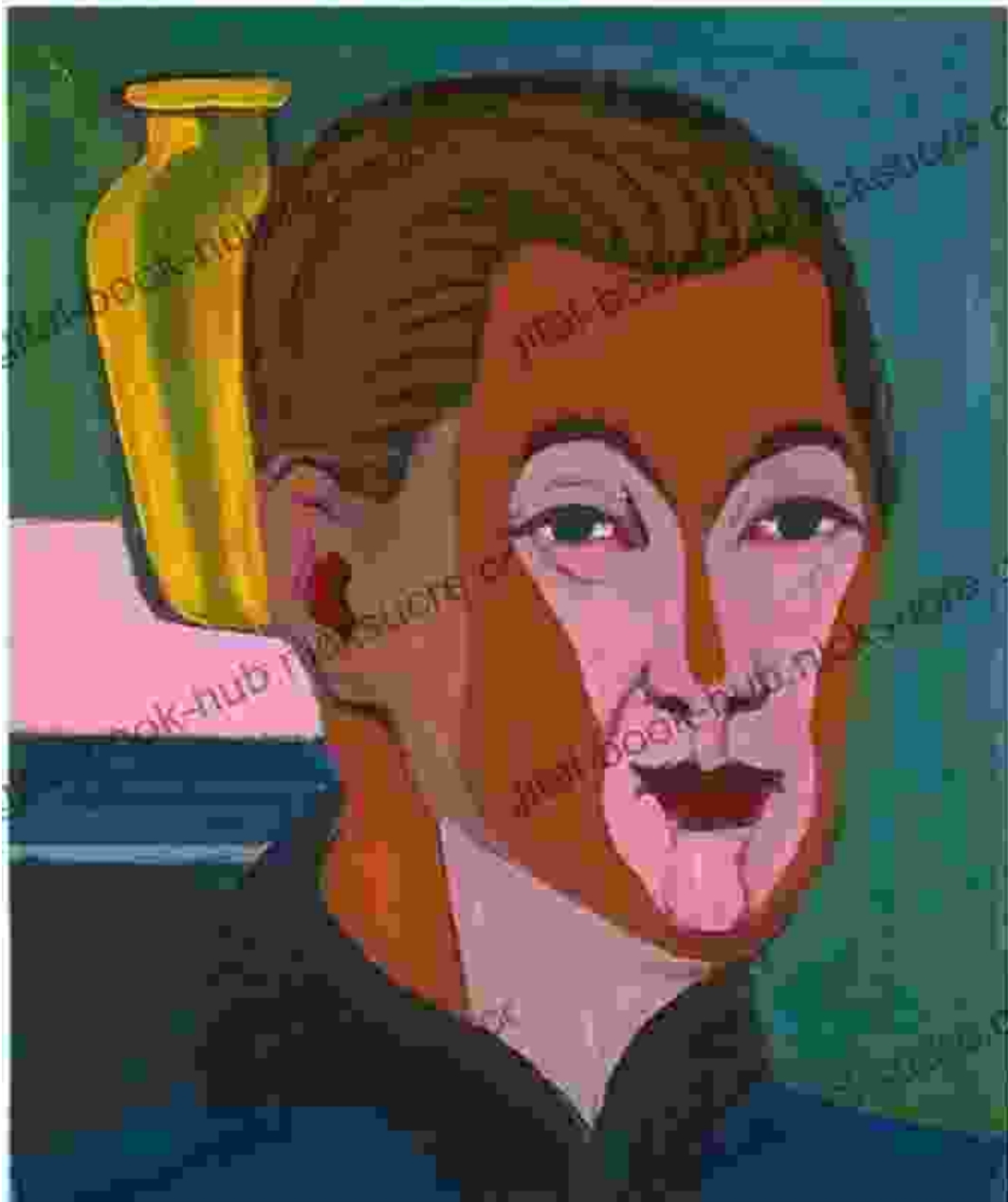


The stark colors in Kirchner's "Winter Landscape" convey the isolation and tranquility of a snow-covered landscape.

### **Portraits and Self-Portraits**

Kirchner's color paintings also include a significant number of portraits and self-portraits. These works reveal his keen eye for capturing the emotions

and inner lives of his subjects. In "Self-Portrait with Cigarette" (1925), he depicts himself with a contemplative gaze and a palette of muted colors. "Portrait of Gerda" (1923) portrays his wife with a vibrant and expressive use of color, conveying her vitality and energy.







The vibrant colors in Kirchner's "Portrait of Gerda" capture the vitality and energy of his wife.

### **Legacy and Influence**

Ernst Ludwig Kirchner's color paintings made significant contributions to German Expressionism and continue to be celebrated for their emotional

intensity, vibrant colors, and unique perspectives on the human condition. His work has influenced countless artists and art movements, leaving a lasting legacy in the world of art history.

## **: A Vibrant Tapestry of Color and Expression**

Ernst Ludwig Kirchner's 384 color paintings form a vibrant and evocative body of work that captures the essence of urban life, nature, and the human condition. His masterful use of color and expressive brushstrokes convey a range of emotions and perspectives, offering a unique and compelling glimpse into the early 20th century.

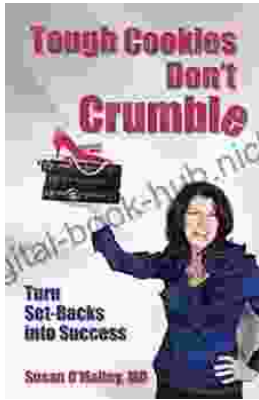


### **384 Color Paintings of Ernst Ludwig Kirchner - German Expressionist Painter and Printmaker (May 6, 1880 - June 15, 1938)**

★★★★☆ 4.3 out of 5

Language : English  
File size : 18615 KB  
Text-to-Speech : Enabled  
Screen Reader : Supported  
Enhanced typesetting : Enabled  
Lending : Enabled





## **Tough Cookies Don't Crumble: The Unbreakable Spirit of Those Who Overcome Adversity**

Life is full of challenges. We all face them, in one form or another. But for some people, the challenges are so great that they seem insurmountable. They may come in...



## **The California-Born Diners, Burger Joints, and Fast Food Restaurants That Changed the World**

California is known for many things, but its fast food scene is one of its most iconic. From In-N-Out to McDonald's, some of the most well-known fast food...